

Standard and Optional Equipment

Standard Equipment

- Linde digital controller
- German brand motors
- Lead acid battery
- German gear pump
- Integrated steering axle
- Fork landing cushion
- Load backrest
- Pneumatic tires
- Warp-around seat
- Seat safety switch
- Small diameter steering wheel
- Linde single pedal system
- Linde central lever
- 4,3" colour display
- USB charger
- LED headlight and LED rear light
- Vertical battery change

Optional Equipment

- Twin pedal
- SE tires
- Integrated side shifter
- Hook-on side shifter
- One, two additional hydraulic circuits for attachments
- Flashing beacon
- Blue Spot

Other Options Available on Request



Linde Battery Counterbalance Forklift Truck

CAPACITY 2000, 2500 kg
E20B-01, E25B-01 **1293**

Ergonomics Comfort Safety

Ergonomic design, spacious operating compartment, comfort driving Central control lever realizes simultaneous mast lifting, lowering and tilting; Small diameter steering wheel effectively reduces driver shoulder turning and reduce driver fatigue

Surging Power Flexible Operation

With over 50 years of German experience in electric forklift truck software programming. Short acceleration time to achieve fast direction change; 18% climbing ability with full load, start at half slope and keep ≥2km/h travel speed

Power on Demand Long Battery Remaining

Equipped with potentiometer digital control system, precisecalculation to achieve power on-demand, real-time control drive and mast operation speed. Smart driving system by adopting advanced entire controller to schedule drive and pump motor modules, high efficiency and less energy consumption

Modular Design Easy Maintenance

Thanks to modular design, it simplifies service process and reduces 15%-20% of checking & repairing time. Configured with mobile phone accessible diagnostic App, improving troubleshooting convenience. Apply higher quality oils and filters, reducing replacement frequency and maintenance cost

Features

Linde digital controller

- Over 50 years of German experience in electric forklift truck software programming
- German brand motors



4,3" standard display

- Wide screen design, clearer visibility
- Display of main fault messages
- The screen display real-time traveling speed, battery status, alarm and operating hours that easier to scan and understand
- 3 power settings could be adjusted in display



Linde operator's compartment

- Central lever
- Small diameter steering wheel
- Foot parking brake



Linde clear-view mast

- Superb visibility through slim-profile
- Sections of mast full load capacity up to maximum lift
- High residual capacity

Subject to modification in the interests of progress, illustration and technical details not binding for actual constructions and may show the optional equipments.

1293_E20B-01/E25B-01_D-01_202111

Linde Material Handling

Linde

Technical Data

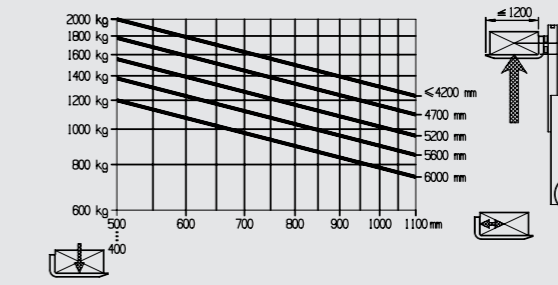
| | | | | | |
|-----------------|---------------------------------|--|---|----------------------|----------------------|
| Characteristics | 1.1 | Manufacturer | | LINDE | LINDE |
| | 1.2.1 | Model designation | | E20B-01 | E25B-01 |
| | 1.3 | Drive: electric (battery type, mains, ...), diesel, petrol, fuel gas | | Electric | Electric |
| | 1.4 | Operator type: hand, pedestrian, standing, seated, order-picker | | Seated | Seated |
| | 1.5 | Rated capacity/rated load | | 2.0 | 2.5 |
| | 1.6 | Load centre distance | Q (t) | 500 | 500 |
| | 1.7 | Load distance, centre of drive axle to fork | c (mm) | 464 | 464 |
| | 1.8 | Wheelbase | x (mm) | 1545 | 1545 |
| Weights | 2.1 | Service weight | y (mm) | 3660 | 4140 |
| | 2.2 | Axle loading, laden front/rear | kg | 5008/652 | 5805/835 |
| | 2.3 | Axle loading, unladen front/rear | kg | 1760/1900 | 1745/2395 |
| Wheels | 3.1 | Tyres: solid rubber, superelastic, pneumatic, polyurethane | kg | pneumatic | pneumatic |
| | 3.2 | Tyre size, front | | 23X9-10 | 23X9-10 |
| | 3.3 | Tyre size, rear | | 18x7-8 | 18x7-8 |
| | 3.5 | Wheels, number front/rear (x=driven wheels) | | 2X /2 | 2X /2 |
| | 3.6 | Tread, front | | 1040 | 1040 |
| | 3.7 | Tread, rear | b10 (mm) | 950 | 950 |
| | Dimensions | 4.1 | Tilt of mast/fork carriage forward/backward | b11 (mm) | 6/10 |
| 4.2 | | Height of mast, lowered | a/b (°) | 2070 | 2068 |
| 4.3 | | Free lift | h1 (mm) | 150 | 150 |
| 4.4 | | Lift | h2 (mm) | 3000 | 3000 |
| 4.5 | | Height of mast, extended | h3 (mm) | 3995 | 3995 |
| 4.6 | | Height of overhead guard (cabin) | h4 (mm) | 2150 | 2150 |
| 4.7 | | Height of seat/stand-on platform | h6 (mm) | 1166 | 1166 |
| 4.8 | | Coupling height | h7 (mm) | 660 | 660 |
| 4.19 | | Overall length | h10 (mm) | 3420 | 3420 |
| 4.20 | | Length to face of forks | l1 (mm) | 2420 | 2420 |
| 4.21 | | Overall width | l2 (mm) | 1265 | 1265 |
| 4.22 | | Fork dimensions ISO 2331 | b1 / b2 (mm) | 45x100x1000 | 45x100x1000 |
| 4.23 | | Fork carriage to ISO 2338, class/type A, B | sxexl (mm) | 2A | 2A |
| 4.24 | | Fork-carriage width | | 1040 | 1040 |
| 4.31 | | Ground clearance, laden, below mast | b3 (mm) | 106 | 102 |
| 4.32 | | Ground clearance, centre of wheelbase | m1 (mm) | 120 | 120 |
| 4.33 | | Aisle width with pallet 1000x1200 across forks | m2 (mm) | 3760 | 3760 |
| 4.34 | | Aisle width with pallet 800x1200 along forks | Ast (mm) | 3960 | 3960 |
| 4.35 | | Turning radius | Ast (mm) | 2096 | 2096 |
| 4.36 | Minimum pivoting point distance | Wa (mm) | 582 | 582 | |
| Performances | 5.1 | Travel speed, laden/unladen | b13 (mm) | 15/15 | 15/15 |
| | 5.2 | Lift speed, laden/unladen | km/h | 0.33/0.45 | 0.28/0.45 |
| | 5.3 | Lowering speed, laden/unladen | m/s | 0.43/0.47 | 0.43/0.47 |
| | 5.4 | Max. drawbar pull, laden/unladen | m/s | 11900 / 9600 | 11700/9500 |
| | 5.5 | Max. gradeability, laden/unladen | N | 18/20 | 18/20 |
| | 5.6 | Acceleration time, laden/unladen | % | 6.0/5.5 | 6.3/5.5 |
| | 5.7 | Service brake | s | Mechanical hydraulic | Mechanical hydraulic |
| Drive | 6.1 | Drive motor rating S2 60 min | | 10.2 | 10.2 |
| | 6.2 | Lift motor rating at S3 15% | kW | 11.5 | 11.5 |
| | 6.3 | Battery according to DIN 43531/35/36 A, B, C, no | kW | DIN 43536 A | DIN 43536 A |
| | 6.4 | Battery voltage/nominal capacity K5 | | 80/360 | 80/360 |
| | 6.5 | Battery weight (E) | V/Ah | 990 | 990 |
| Others | 7.1 | Operating pressure for attachments | kg | 145 | 170 |
| | 7.2 | Oil flow for attachments | bar | 24 | 24 |
| | 7.3 | Sound pressure level at the driver's seat | l/min | 65 | 65 |

dB(A)

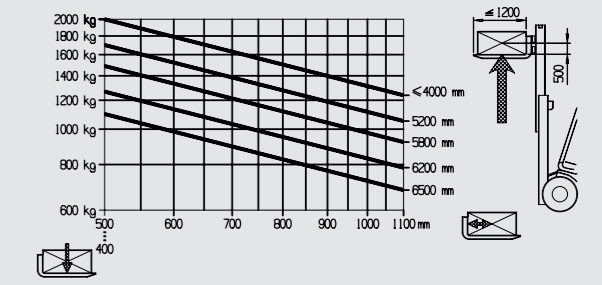
Figures for standard version may vary when options equipment is fitted

Lifting Capacity Diagram for Standard/Duplex Mast/ Triplex Mast with Standard Fork Carriage

E20B-01

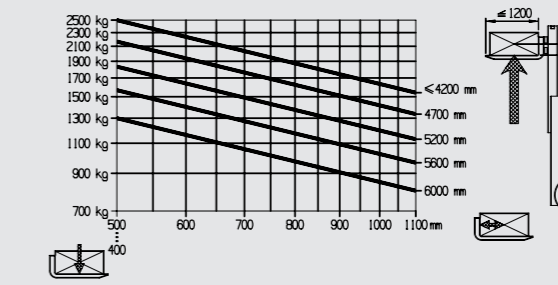


Standard, Duplex mast

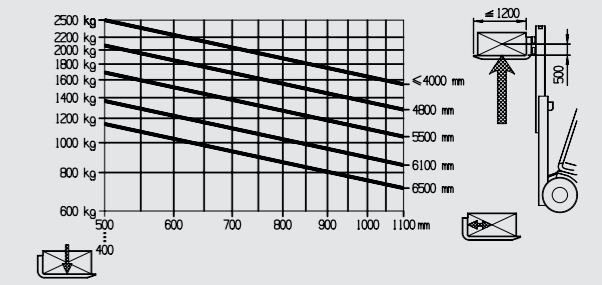


Triplex mast

E25B-01



Standard, Duplex mast



Triplex mast

Mast Datasheet (in: mm)

| Standard masts (mm) | | E20/25B-01 | | | | | | | |
|--------------------------------|----|------------|------|------|------|------|------|------|------|
| Lift height | h3 | 3000 | 3300 | 3500 | 3600 | 4000 | 4500 | 5000 | 5500 |
| Retracted height | h1 | 2070 | 2220 | 2320 | 2370 | 2620 | 2870 | 3120 | 3420 |
| Free lift | h2 | 150 | 150 | 150 | 150 | 150 | 150 | 150 | 150 |
| Height of overall at max. lift | h4 | 3995 | 4295 | 4495 | 4595 | 4995 | 5495 | 5995 | 6495 |

| Duplex masts (mm) | | E20/25B-01 | | | | |
|--|----|------------|------|------|------|------|
| Lift height | h3 | 3000 | 3300 | 3500 | 4000 | 4500 |
| Retracted height (Height of mast, lowered) | h1 | 2036 | 2186 | 2286 | 2586 | 2836 |
| Free lift | h2 | 1385 | 1535 | 1635 | 1935 | 2185 |
| Height overall at max. lift | h4 | 3995 | 4295 | 4495 | 4995 | 5495 |

| Triplex masts (mm) | | E20/25B-01 | | | | | | | |
|--|----|------------|------|------|------|------|------|------|------|
| Lift height | h3 | 4100 | 4550 | 4650 | 5000 | 5250 | 5500 | 6000 | 6500 |
| Retracted height (Height of mast, lowered) | h1 | 1986 | 2186 | 2186 | 2336 | 2486 | 2586 | 2836 | 3036 |
| Free lift | h2 | 1335 | 1535 | 1535 | 1685 | 1835 | 1935 | 2185 | 2385 |
| Height overall at max. lift | h4 | 5095 | 5545 | 5645 | 5995 | 6245 | 6495 | 6995 | 7495 |